



19435 South O'Brien RD, Groveland, FL 34736  
 Phone: +1 (352)-429-5787

## BATTERY SYSTEM INFORMATION

These details help us determine the best HYDROCAP Vent for your system.

1. Please e-mail us a picture of your battery's vent cap threads/fitting along with this form.

System voltage: \_\_\_\_\_ Number of parallel banks: \_\_\_\_\_

Battery Manufacturer: \_\_\_\_\_; Model No: \_\_\_\_\_; Rating: \_\_\_\_\_ AH \_\_\_\_\_ hr. rate  
 TYPE: Alkaline \_\_\_\_\_ or Lead-Acid \_\_\_\_\_; PLATES: Antimony \_\_\_\_\_ or Calcium \_\_\_\_\_

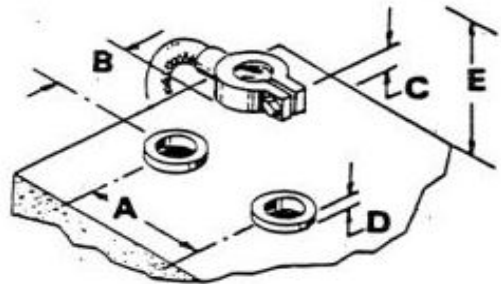
Number of HYDROCAP vents needed for this system \_\_\_\_\_

2. Measure your battery to the nearest 1/16 inch.

- \_\_\_\_\_ A — Center to center of the closest vent openings; if 2-1/2" or more, mark X.
- \_\_\_\_\_ B — Center of vent to nearest side of connector terminal or obstruction, which would limit side clearance; if 1-1/4" or more mark B and C with an X.
- \_\_\_\_\_ C — Height of terminal or obstruction within 1-1/4" of vent center, from battery top surface.
- \_\_\_\_\_ D — Height of vent cap sealing surface from battery top; if flush, mark X.
- \_\_\_\_\_ E — Height to cover or obstruction above battery top; if 3" or more, mark X.

Please print your  
 name, company, and  
 street address

\_\_\_\_\_  
 \_\_\_\_\_  
 \_\_\_\_\_  
 \_\_\_\_\_  
 \_\_\_\_\_



3. For solar systems only.

Measure the charger current with an ammeter when the battery is fully charged and not supplying any power.

NOTE: This is normally a low value. \_\_\_\_\_ Amps.

Discharge the battery 30% or more. Turn on the charger and remove all the vent caps. Look at the electrolyte in every cell each 1/2 hour. When the first cell starts to gas freely (3 to 4 bubbles each second; continuously) read the charging current ammeter. \_\_\_\_\_ Amps.

Start timing until the ammeter reading is back down to the low values. \_\_\_\_\_ hrs.

Charger Manuf. \_\_\_\_\_; Model No. \_\_\_\_\_; Max. Output current \_\_\_\_\_ amps.

SOLAR Mfg. \_\_\_\_\_; Model No. \_\_\_\_\_; Number of panels \_\_\_\_\_; Tracker Y/N \_\_\_\_\_.

Controller Mfg. \_\_\_\_\_; Model No. \_\_\_\_\_; Cut off voltage \_\_\_\_\_.

### OTHER CHARGING:

Wind: Cut off voltage: \_\_\_\_\_

Hydro: Cut off voltage: \_\_\_\_\_

Solar only; No other charger. \_\_\_\_\_